



Institut Hospital del Mar
d'Investigacions Mèdiques

Sessions Generals – Hospital del Mar
El finançament de la recerca a Europa

Descripció dels programes dins H2020

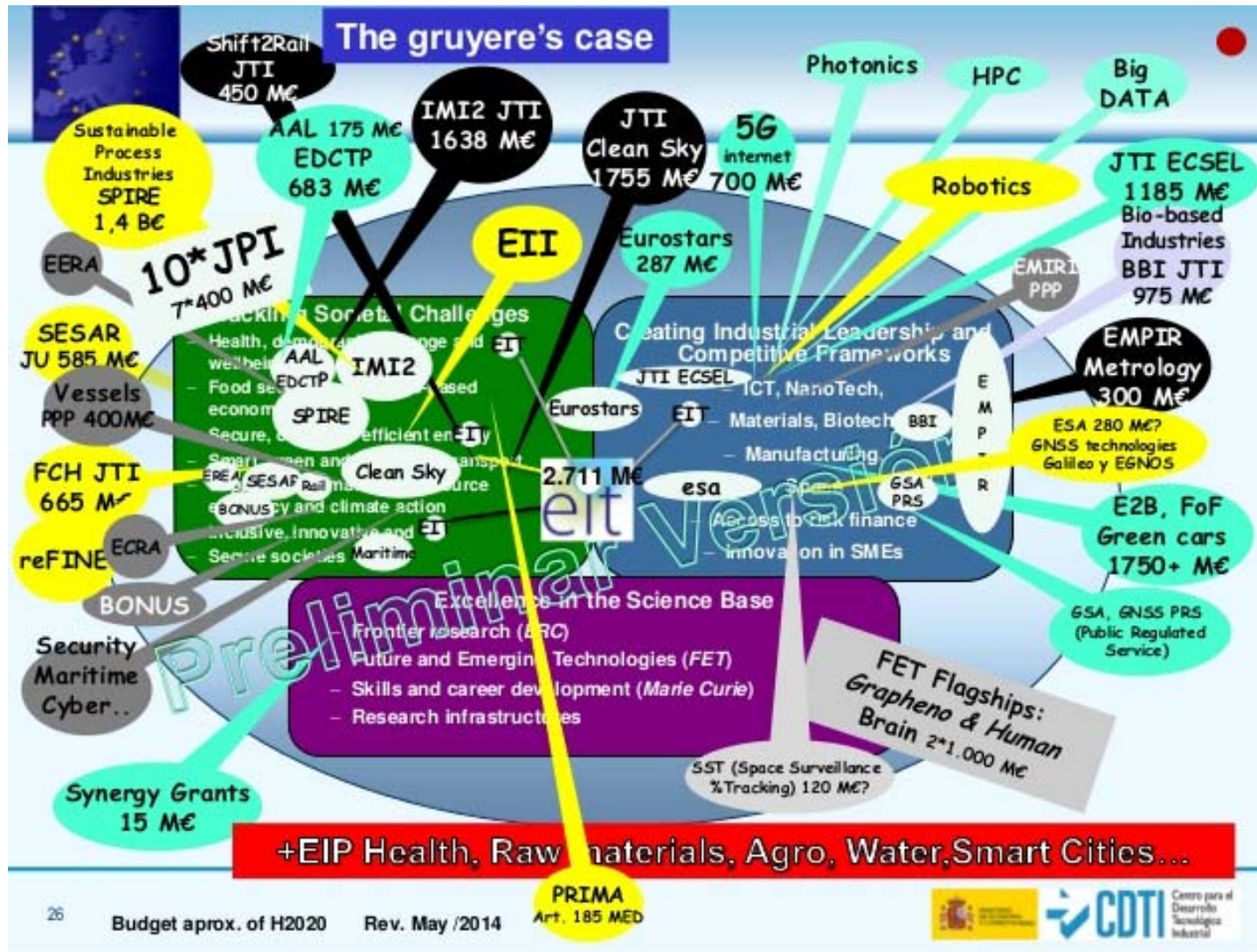
09/05/2017



Marta López – Cap del Servei de Recerca IMIM



H2020 Structure



Main Pillars

I. Excellent Science

ERC

FET

Marie Skłodowska-Curie

Infrastructures

II. Industrial Leadership

LEIT

Leadership in Enabling and Industrial Technologies

ICT, Nanotechnologies, Advanced Materials, Biotechnology, Production Technology, Space

Access to Risk Finance

Innovation in SMEs

III. Societal Challenges

Health, Demographic Change and Wellbeing

Challenges in the European Bioeconomy...

Secure, clean and efficient Energy

Smart, green and integrated transport

Climate, environment, resource efficiency & raw materials

Integrative, innovative and reflective societies

Secure societies



Main Pillars

I. Excellent Science

ERC

FET

Marie Skłodowska-Curie

Infrastructures

II. Industrial Leadership

LEIT

Leadership in Enabling and Industrial Technologies

ICT, Nanotechnologies, Advanced Materials, Biotechnology, Production Technology, Space

Access to Risk Finance

Innovation in SMEs

III. Societal Challenges

Health, Demographic Change and Wellbeing

Challenges in the European Bioeconomy...

Secure, clean and efficient Energy

Smart, green and integrated transport

Climate, environment, resource efficiency & raw materials

Integrative, innovative and reflective societies

Secure societies



Main Pillars

I. Excellent Science

ERC

FET

Marie
Skłodowska-Curie

Infrastructures

www.imim.es



European Research Council

Established by the European Commission

- **Frontier research, groundbreaking, high-risk/high gain, projects**
- **Excellence** as the only criterion
- No predetermined subjects (**bottom-up**)
- Support for the **individual scientist** – no networks! (except for Synergy Grants, new call in 2018)



Main Pillars

I. Excellent Science

ERC

FET

Marie Skłodowska-Curie

Infrastructures

ERC Grant Schemes

Starting Grant

2-7 years after PhD

Up to € 2.0 Mio for 5 years

Consolidator Grant

7-12 years after PhD

Up to € 2.75 Mio for 5 years

Advanced Grant

Track-record of significant research achievements in the last 10 years

Up to € 3.5 Mio for 5 years

Synergy Grant

Top researchers with complementary skills and knowledge

Up to € 15 Mio for 6 years (2012 call)

Proof-of-Concept

bridging gap between research – earliest stage of marketable innovation

up to €150,000 for ERC grant holders



Main Pillars

I. Excellent Science

ERC

FET

Marie
Skłodowska-Curie

Infrastructures

Future and Emerging Technologies

- New lines of technology through collaboration between science and engineering

New ideas

FET
Open

New research
communities

FET
Proactive

Initiatives for
ambitious
challenges

FET
Flagships



Human Brain Project



Main Pillars

I. Excellent Science

ERC

FET

Marie Skłodowska-Curie

Infrastructures



MARIE CURIE ACTIONS

- **Training and career development** for researchers
- Transnational, intersectoral and interdisciplinary **mobility**
- No predetermined subjects (**bottom-up**)



Main Pillars

MSCA Grant Schemes

I. Excellent Science

ERC

FET

Marie Skłodowska-Curie

Infrastructures

Research Networks (ITN)

Joint research training and/or doctoral programmes

Individual Fellowships (IF)

Post-doctoral fellowships within and beyond Europe

Research and Innovation Staff Exchange (RISE)

International and inter-sectorial exchange of staff

Cofunding of regional, national and international programmes (COFUND)

European Researchers' Night



Main Pillars

II. Industrial Leadership

LEIT

Leadership in Enabling and Industrial Technologies

ICT, Nanotechnologies, Advanced Materials, Biotechnology, Production Technology, Space

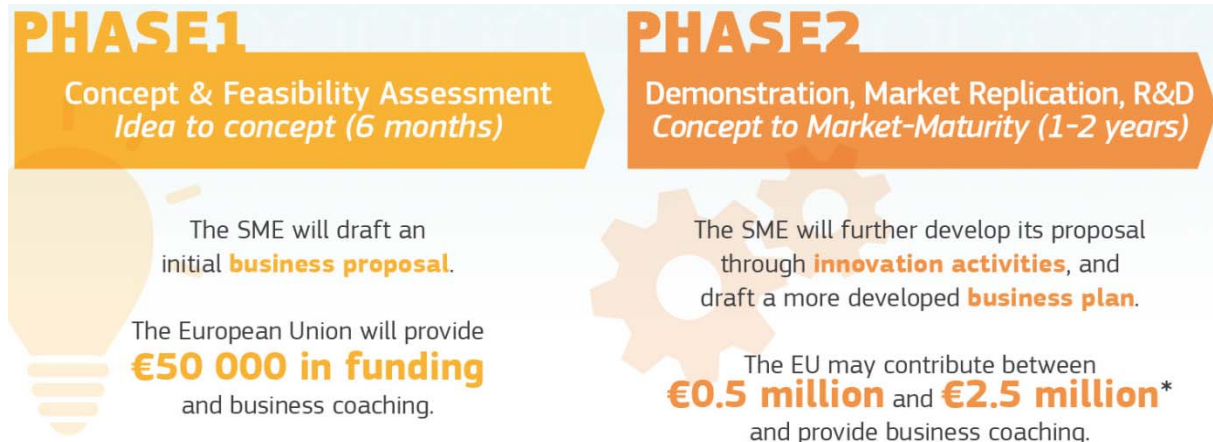
Access to Risk Finance

Innovation in SMEs



➤ Funding for SMEs

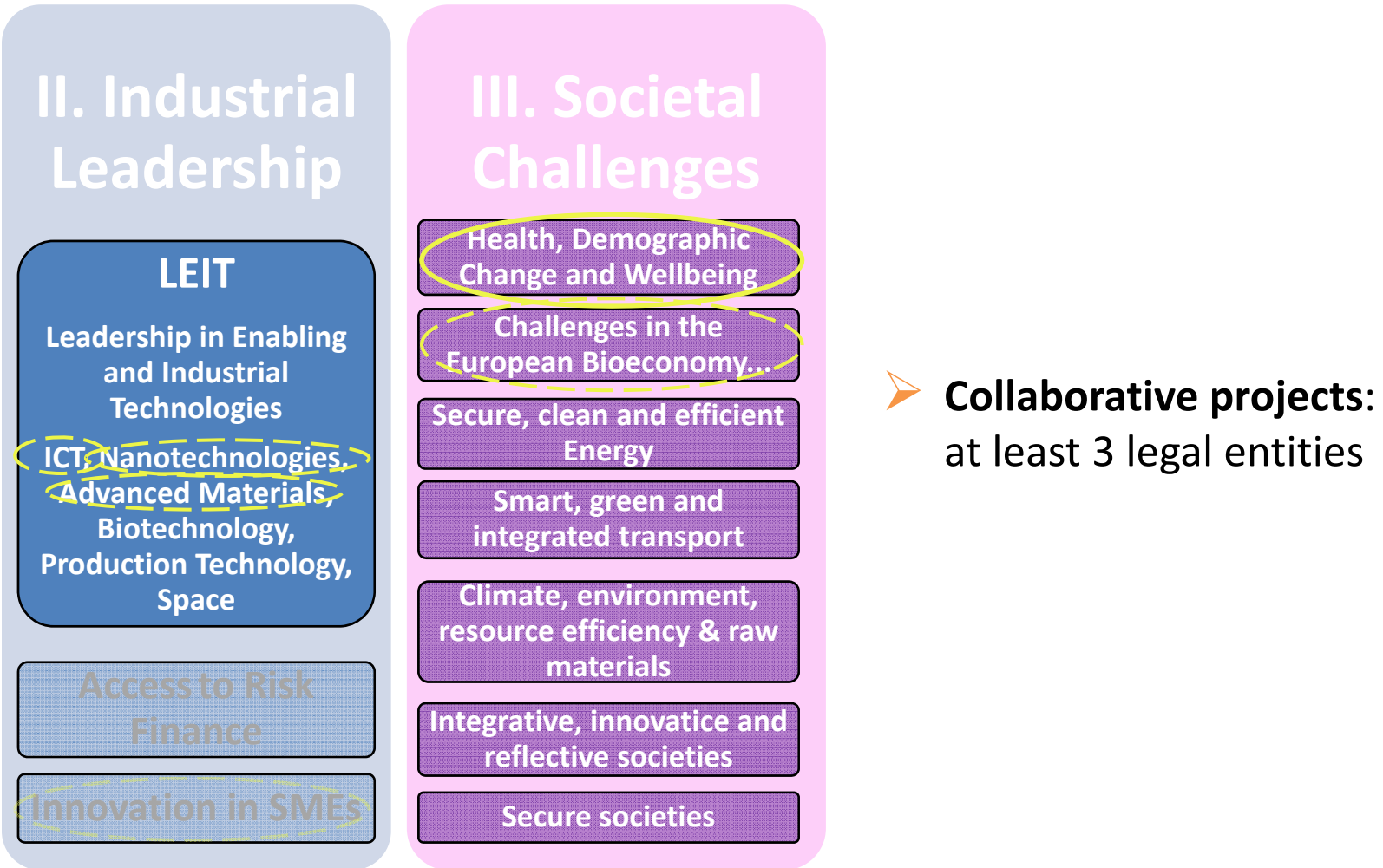
➤ Possibility of subcontracting



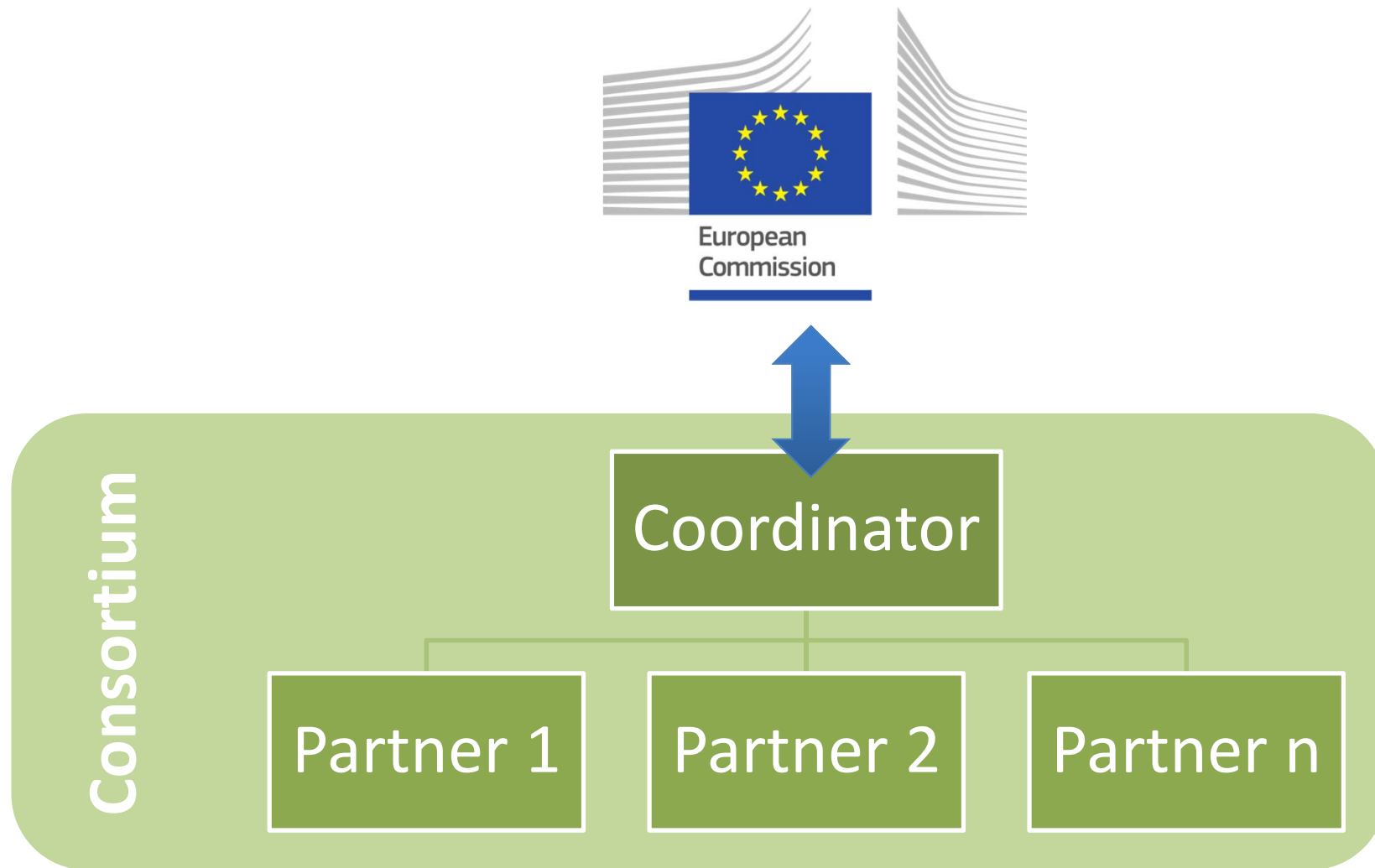
Font: EASME



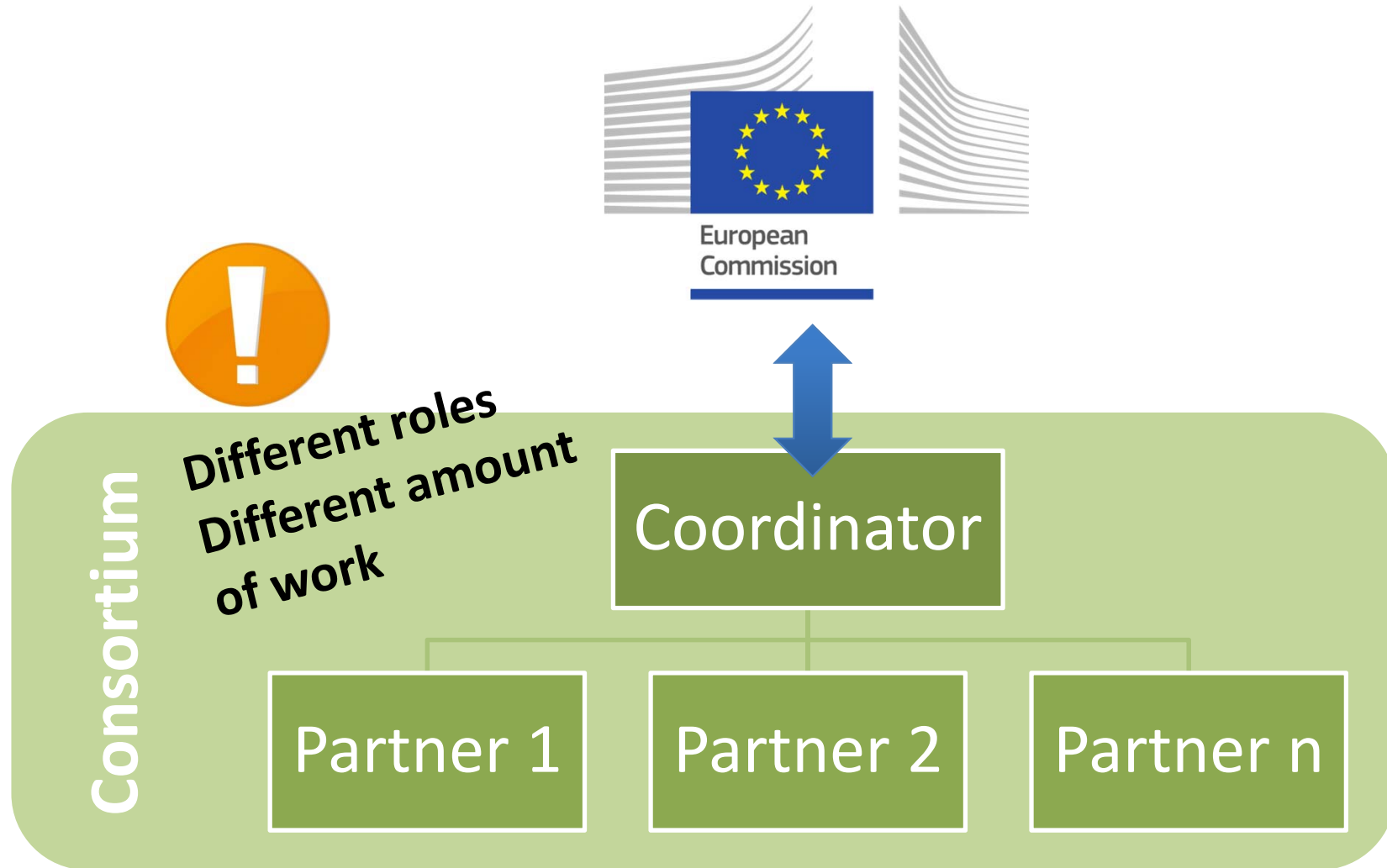
Main Pillars



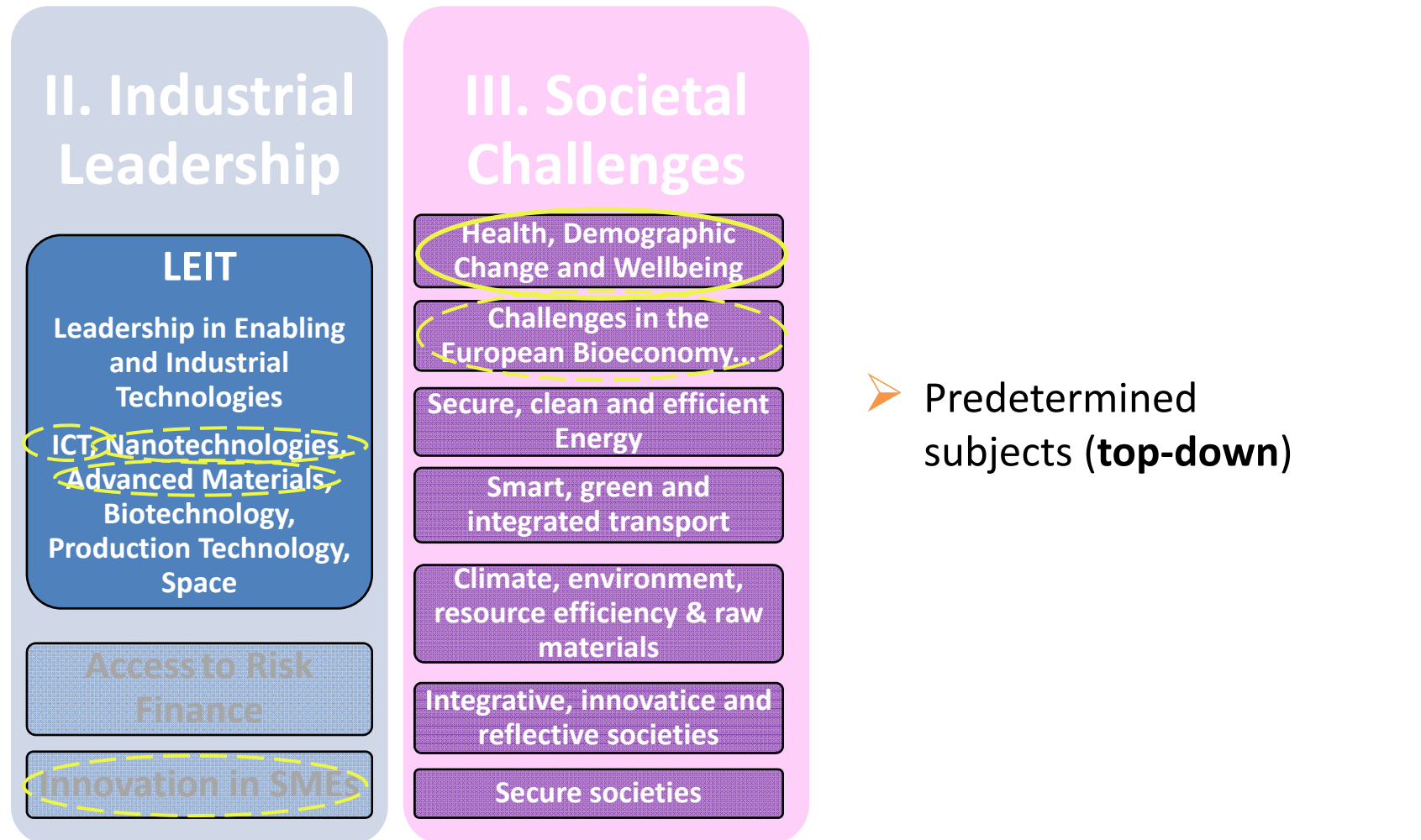
Structure of collaborative projects



Structure of collaborative projects



Main Pillars



Topics and Work Programmes

SCI-PM-09-2016: New therapies for chronic diseases

Specific Challenge: Chronic diseases represent a significant burden on individuals and healthcare systems in the European Union and beyond. Innovative and effective therapeutic approaches are required to provide the best quality of care when prevention strategies fail. While considerable basic knowledge has been generated by biomedical research in recent years, the development of new therapies is stagnating, in part due to a lack of clinical validation.

Scope: Proposals should focus on clinical trial(s), supporting proof of concept of clinical safety and efficacy in humans¹⁶ of novel therapies (pharmacological as well as non-pharmacological) or the optimisation of available therapies (e.g. repurposing) for chronic non-communicable or chronic infectious diseases. Preclinical research should be completed before the start of the project. Proposals should provide a sound feasibility assessment, justified by available publications or provided preliminary results. Gender and age must be considered whenever relevant. Due consideration should also be paid to involve patients and take their views into account wherever relevant. Rare diseases and regenerative medicine are not within the scope of this topic^{17, 18}.

The Commission considers that proposals requesting a contribution from the EU of between EUR 4 and 6 million would allow this specific challenge to be addressed appropriately. Nonetheless, this does not preclude submission and selection of proposals requesting other amounts.

Expected Impact:

- New or optimised therapeutic strategies, adapted where relevant to the different needs of men, women, children and the elderly, with the highest potential to generate advances in clinical practice and care for chronic non-communicable or chronic infectious diseases.
- Improve the therapeutic outcome of major chronic health issues with significant impact on disease burden of individual patients and health care systems.

Type of Action: Research and Innovation action

The conditions related to this topic are provided at the end of this call and in the General Annexes.



Topics

SCI-PM-09-2016: New therapies for chronic diseases

Specific Challenge: Chronic diseases represent a significant burden on individuals and healthcare systems in the European Union and beyond. Innovative and effective therapeutic approaches are required to provide the best quality of care when prevention strategies fail. While considerable basic knowledge has been generated by biomedical research in recent years, the development of new therapies is stagnating, in part due to a lack of clinical validation.

Scope: Proposals should include a clear description of concept of clinical

Specific Challenge: Chronic diseases represent a significant burden on individuals and healthcare systems in the European Union and beyond. Innovative and effective therapeutic approaches are required to provide the best quality of care when prevention strategies fail. While considerable basic knowledge has been generated by biomedical research in recent years, the development of new therapies is stagnating, in part due to a lack of clinical validation.

Expected Impact:

- New or optimised therapeutic strategies, adapted where relevant to the different needs of men, women, children and the elderly, with the highest potential to generate advances in clinical practice and care for chronic non-communicable or chronic infectious diseases.
- Improve the therapeutic outcome of major chronic health issues with significant impact on disease burden of individual patients and health care systems.

Type of Action: Research and Innovation action

The conditions related to this topic are provided at the end of this call and in the General Annexes.



Topics

SCI-PM-09-2016: New therapies for chronic diseases

Specific Challenge: Chronic diseases represent a significant burden on individuals and healthcare systems in the European Union and beyond. Innovative and effective therapeutic approaches are required to provide the best quality of care when prevention strategies fail. While considerable basic knowledge has been generated by biomedical research in recent years, the development of new therapies is stagnating, in part due to a lack of clinical validation.

Scope: Proposals should focus on clinical trial(s), supporting proof of concept of clinical

Scope: Proposals should focus on clinical trial(s), supporting proof of concept of clinical safety and efficacy in humans¹⁶ of novel therapies (pharmacological as well as non-pharmacological) or the optimisation of available therapies (e.g. repurposing) for chronic non-communicable or chronic infectious diseases. Preclinical research should be completed before the start of the project. Proposals should provide a sound feasibility assessment, justified by available publications or provided preliminary results. Gender and age must be considered whenever relevant. Due consideration should also be paid to involve patients and take their views into account wherever relevant. Rare diseases and regenerative medicine are not within the scope of this topic^{17, 18}.

The Commission considers that proposals requesting a contribution from the EU of between EUR 4 and 6 million would allow this specific challenge to be addressed appropriately. Nonetheless, this does not preclude submission and selection of proposals requesting other amounts.



Topics

SCI-PM-09-2016: New therapies for chronic diseases

Specific Challenge: Chronic diseases represent a significant burden on individuals and healthcare systems in the European Union and beyond. Innovative and effective therapeutic approaches are required to provide the best quality of care when prevention strategies fail

Expected Impact:

- New or optimised therapeutic strategies, adapted where relevant to the different needs of men, women, children and the elderly, with the highest potential to generate advances in clinical practice and care for chronic non-communicable or chronic infectious diseases.
- Improve the therapeutic outcome of major chronic health issues with significant impact on disease burden of individual patients and health care systems.

Nonetheless, this does not request other amounts.

Expected Impact:

- New or optimised therapeutic strategies, adapted where relevant to the different needs of men, women, children and the elderly, with the highest potential to generate advances in clinical practice and care for chronic non-communicable or chronic infectious diseases.
- Improve the therapeutic outcome of major chronic health issues with significant impact on disease burden of individual patients and health care systems.

Type of Action: Research and Innovation action

The conditions related to this topic are provided at the end of this call and in the General Annexes.



Topics

SCI-PM-09-2016: New therapies for chronic diseases

Specific Challenge: Chronic diseases represent a significant burden on individuals and healthcare systems in the European Union and beyond. Innovative and effective therapeutic approaches are required to provide the best quality of care when prevention strategies fail. While considerable basic knowledge has been generated by biomedical research in recent years, the development of new therapies is stagnating, in part due to a lack of clinical validation.

Scope: Proposals should focus on clinical trial(s), supporting proof of concept of clinical safety and efficacy in humans¹⁶ of novel therapies (pharmacological as well as non-pharmacological) or the optimisation of available therapies (e.g. repurposing) for chronic non-communicable or chronic infectious diseases. Preclinical research should be completed before the start of the project. Proposals should provide a sound feasibility assessment, justified by available publications or provided preliminary results. Gender and age must be considered whenever relevant. Due consideration should also be paid to involve patients and take their views into account wherever relevant. Rare diseases and regenerative medicine are not within the scope of this topic^{17, 18}.

The Commission considers that proposals requesting a contribution from the EU of between EUR 4 and 6 million would allow this specific challenge to be addressed appropriately. Nonetheless, this does not preclude submission and selection of proposals requesting other amounts.

Expected Impact:

- New or optimised therapies for men, women, and children, with significant impact on clinical practice.
- Improve the therapeutic options for chronic health issues with significant impact on disease burden on patients and health care systems.

Type of Action: Research and Innovation action

The conditions related to this topic are provided at the end of this call and in the General Annexes.

Type of Action: Research and Innovation action



Other funding opportunities

- Coordination with/among other research stakeholders:
 - Public Public (P2P) networks
 - Public Private Partnerships (PPP) – Joint technology Initiatives (JTI) – art 187
- COST
- Opportunities in other DGs of the EU



Public Public Networks (P2P)

ERA-Nets

Art 169/185

Joint
Programming
Initiatives

- Coordination / joint implementation of research agendas among several European States
- **Transnational** projects
- **Top-down**
- Calls at European level / **funding at National level**



Public Public Networks (P2P)

ERA-Nets



Art 169/185



Joint Programming Initiatives



MORE YEARS
BETTER LIVES



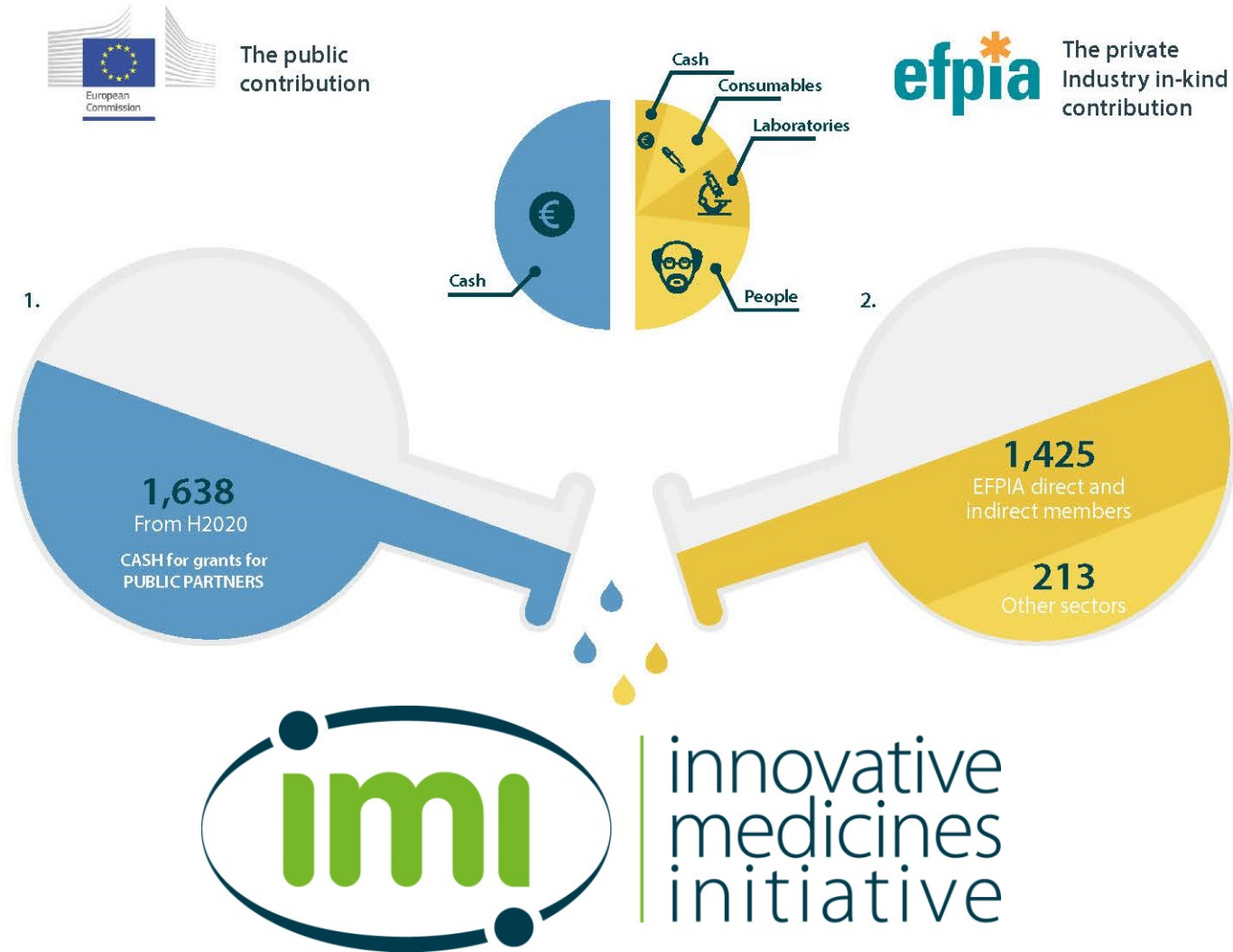
Public Private Partnerships (PPP)



- **Transnational projects**
- **Top-down**



Public Private Partnerships (PPP)



COST



- Funding of research networks
- It does not fund research itself
- Possibility of joining an existing action



Opportunities in other DGs of the EU

3rd Health Programme

DG Health and Food Safety
(CHAFEA)



Drugs Programme

DG Migration and
Home Affairs



- **Transnational projects**
- **Top-down**
- **Co-financing (60-80%)**





Institut Hospital del Mar
d'Investigacions Mèdiques

Moltes gràcies!

Marta López Otero
Cap del Servei de Recerca
ext. 1576

mlopez4@imim.es

